

November 2020 news bulletin

New temporary speed limit between Junction 8/9 and 12

In late December we will temporarily increase the speed limit to 60mph across three full width lanes between junction 8/9 to 12. The fourth lane will remain closed to drivers behind cones.

This is to improve customer journeys during the festive period when construction activity levels are lower. There will still be free recovery if you break down and roadworks CCTV will be operational. There will be a permanent increase in speed limits from junction 8/9 to 12 in early 2021. Full details will be shared in January and on the project website.

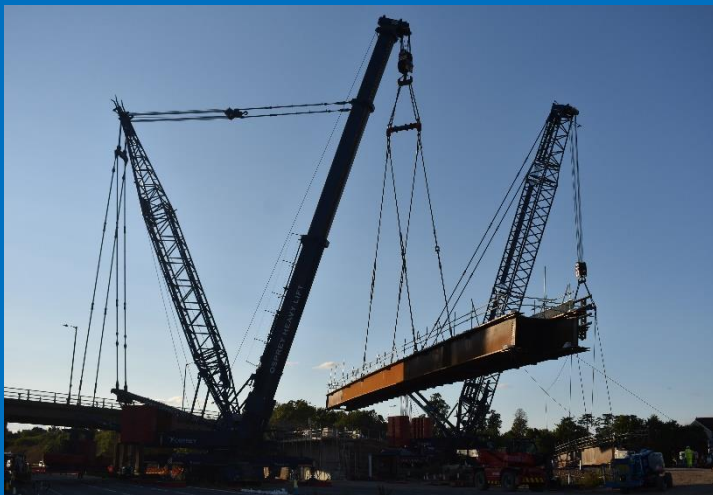
www.highwaysengland.co.uk/m4j3to12

Junction 3 to 8/9 will remain at 50mph.



***Above:** the photo gives an indication of the road layout drivers can expect to see at the end of December. Lane 1 will remain under cones, lanes 2, 3 and 4 will be full width, and free recovery signs will still be visible. The 50mph signs will be temporarily replaced with 60mph signs between junction 8/9 to 12.*

The Last Demolition: Datchet Road Bridge



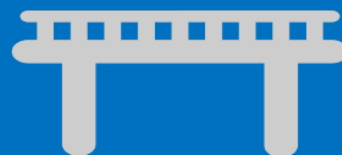
Datchet Road bridge is the last bridge we need to demolish as part of the M4 J3-12 motorway upgrade. This is one of the largest bridges the project has had to rebuild and demolish.

We will be closing the M4 between junctions 5 and 6 from Friday 11 December to Monday 14 December to do this demolition. Motorway traffic will be diverted along the A4 and A355.

The new Datchet Road bridge will also be closed during the demolition weekend and remain closed

until 6am on Wednesday 16 December whilst the road is realigned to the new bridge.

During 2020, the project has made excellent progress on the bridges that need replacing to accommodate the new fourth running lane:



**We have
demolished
10 bridges**

**We installed
beams for 12
bridges over the
motorway**



**We extended
one bridge over
the river
Thames**

The M4 Motorway Project donates recycled material to Windsor Boys School Boat

The project team arranged for the supply of plainings (recycled road surfacing) to Windsor Boys School Boat Club. The 3 loads of material weighing approximately 54 tonnes were donated to help level out the cabins on site. The material donation represents **£1,175.80** worth of resources donated!

I would like to say thank you to your team for arranging for the supply of plainings for the Windsor Boys School Boat Club site. Your team were professional, friendly and efficient and I am pleased to say that the levelling by the cabins is well underway.



Weekend closures

We have four weekend closures remaining in 2020 as part of the M4 J3-12 motorway upgrade. There will also be a new programme of dates for weekend work in 2021 released later this year.

Weekend closures are used to complete work that either would not be possible otherwise e.g. a bridge demolition, extensive surfacing, complex work across multiple lanes. Closures keep drivers and our workers safe whilst upgrades take place.

Junctions 6-8/9

20-23 November

Junctions 10-8/9

27-30 November

Junctions 10-12

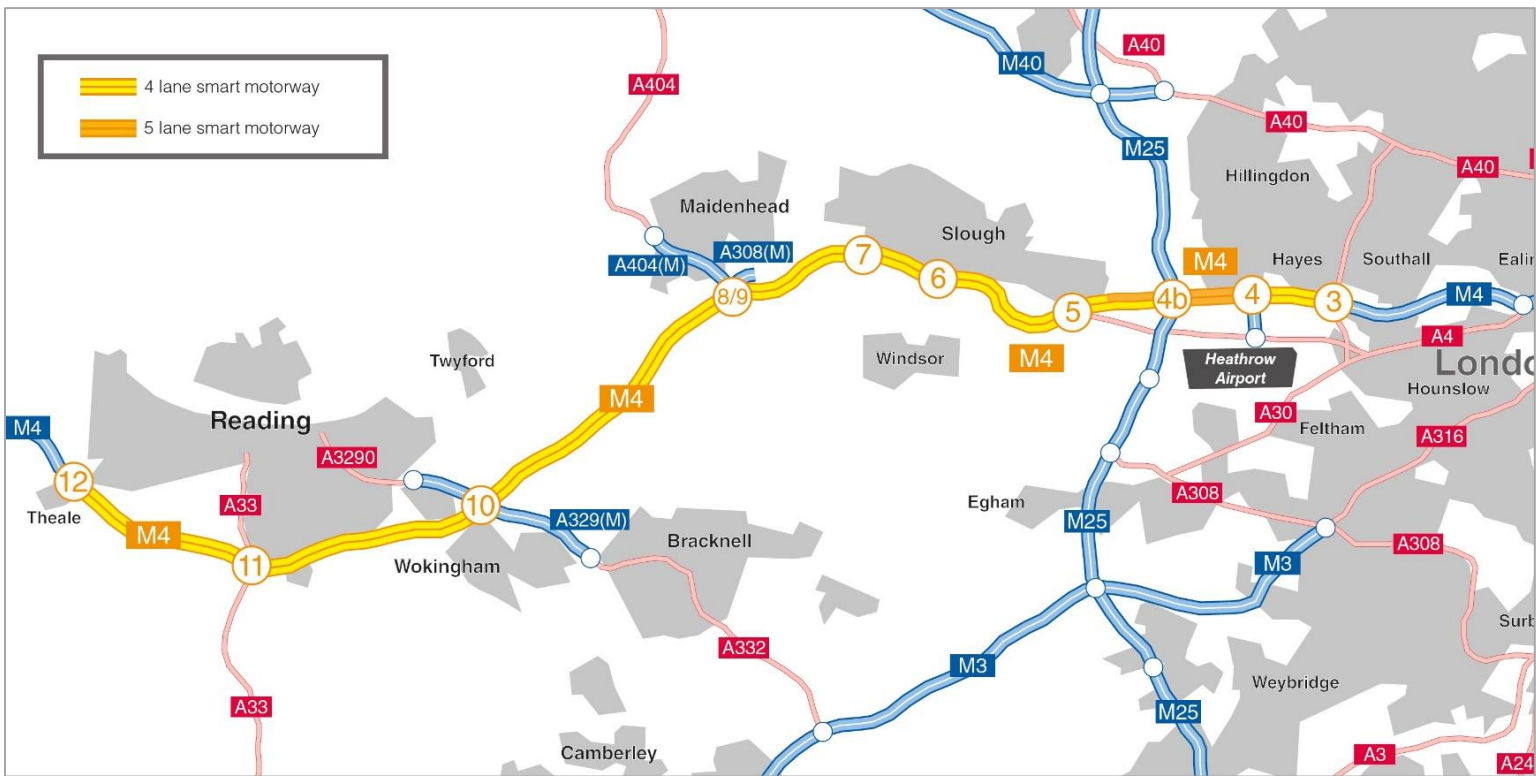
4-7 December

Junctions 5-6

11-14 December

You can find more information on the **Highways England updated website**

For regular updates and information, including upcoming works, click here: www.highwaysengland.co.uk/m4j3to12



Find out more

You can find out more about the project by visiting our website at: www.highwaysengland.co.uk/m4j3to12. You can keep up to date with live traffic information by following the regional twitter feeds [@highwaysEAST](https://twitter.com/highwaysEAST) and [@highwaysSEAST](https://twitter.com/highwaysSEAST) or by visiting [Traffic England](http://TrafficEngland.com). If you have a question that you would like a response to please continue to email us at: M4J3to12smartmotorways@highwaysengland.co.uk, call 0300 123 5000 or write to: M4 J3-12 Motorway Upgrade, Highways England, 2 Colmore Square, Birmingham B4 6BN.